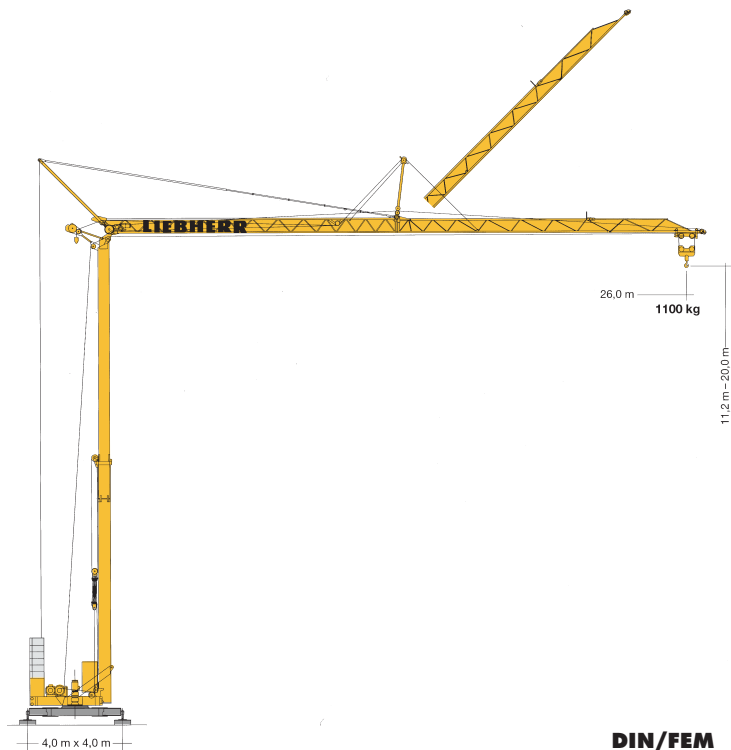


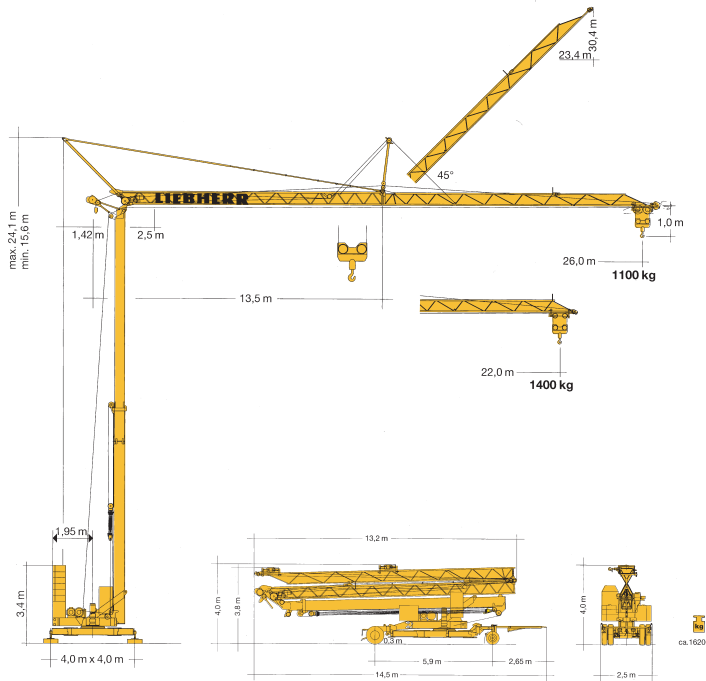
Turmdrehkran 26 K

Tower Crane / Grue à tour / Gru a torre
Grúa torre / Guindaste de torre



DIN/FEM

LIEBHERR




26 K

Gewicht

Weight / Poids / Peso / Peso / Pesos




	<p>$r = 1,95 \text{ m}$ 13000 kg</p>		<p>10000 kg</p>
--	--	--	-----------------




Zentralballast / Central ballast / Lest de base / Zavorra centrale / Lastro central / Lastre central = 1080 kg

m	m/kg 	m/kg															
		11,0	12,0	13,0	14,0	15,0	16,0	17,0	18,0	19,0	20,0	21,0	22,0	23,0	24,0	25,0	26,0
26,0	2,5 - 12,4 2500	2500	2500	2370	2160	1985	1830	1700	1585	1480	1390	1310	1235	1170	1110	1100	1100
22,0	2,5 - 12,9 2500	2500	2500	2480	2270	2080	1925	1790	1670	1560	1460	1400	1400				


Geschwindigkeiten

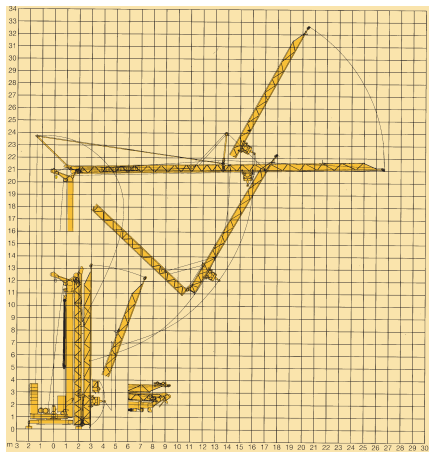
Speeds / Vitesses / Velocità / Velocidades / Velocidades

	U/min 0-0,8 sl./min tr./min	1,5 kW, EDC
	19,0 / 33,0 m/min	0,7 / 1,2 kW
	0-45° ca. 38 sec.	2,2 kW

	Stufe / Step / Cran Marcha / Velocidad Velocidade	
	kg	m/min
11,0 kW (KL) 	1	2500 5,0
	2	2500 20,0
	3	1300 40,0
11,0 kW (FU) 	1	2500 5,0
	2	2500 20,0
	3	1800 30,0
	4	1300 40,0


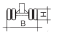


BGL:  2105-0028

	400 V	Hz	kVA
28,0 m	4 x 6 mm ² (KL) 4 x 6 mm ² (FU)	50	21,0 (KL) 17,0 (FU)



Kolli-Liste

Packing List / Liste de colisage / Lista dei colli / Lista de contenido / Lista de embalagem

			L (m)	B (m)	H (m)	kg		
Pos. Item Rep. Qty. Qta. Cant. Ref. Cant.	1	1			3,00	1,13	0,97	660
			Transportachse vorne Tra 100 KY 2 Road transport axle front / Essieux de transport avant / Asse di trasporto anteriore / Eje delantero para transporte / Eixo de transporte dianteiro					
	2	1			1,90	2,50	1,05	1150
			Transportachse hinten Tra 120 GY 1A Road transport axle behind / Essieux de transport arrière / Asse di trasporto posteriore / Eje trasero para transporte / Eixo de transporte traseiro					
	3	1			1,00	0,80	1,00	450
			Kiste mit Seilen und Kleinteilen / Case with ropes and small parts Caisse avec câbles et pièces détachées / Cassa con funi e accessori Caja con cables y piezas sueltas / Caixa contendo cabos e acessórios					

120 P – 4028 H1 B3 DIN 15018 / FEM (Section 1) Krangruppe A3 und OENORM T3 • 01.99 / 6

Konstruktionsänderungen vorbehalten! / Subject to alterations!
 Sous réserves de modifications! / Si fa riserva di modifiche!
 Salvo modificação da construçao! / Sujeito a modificaciones!